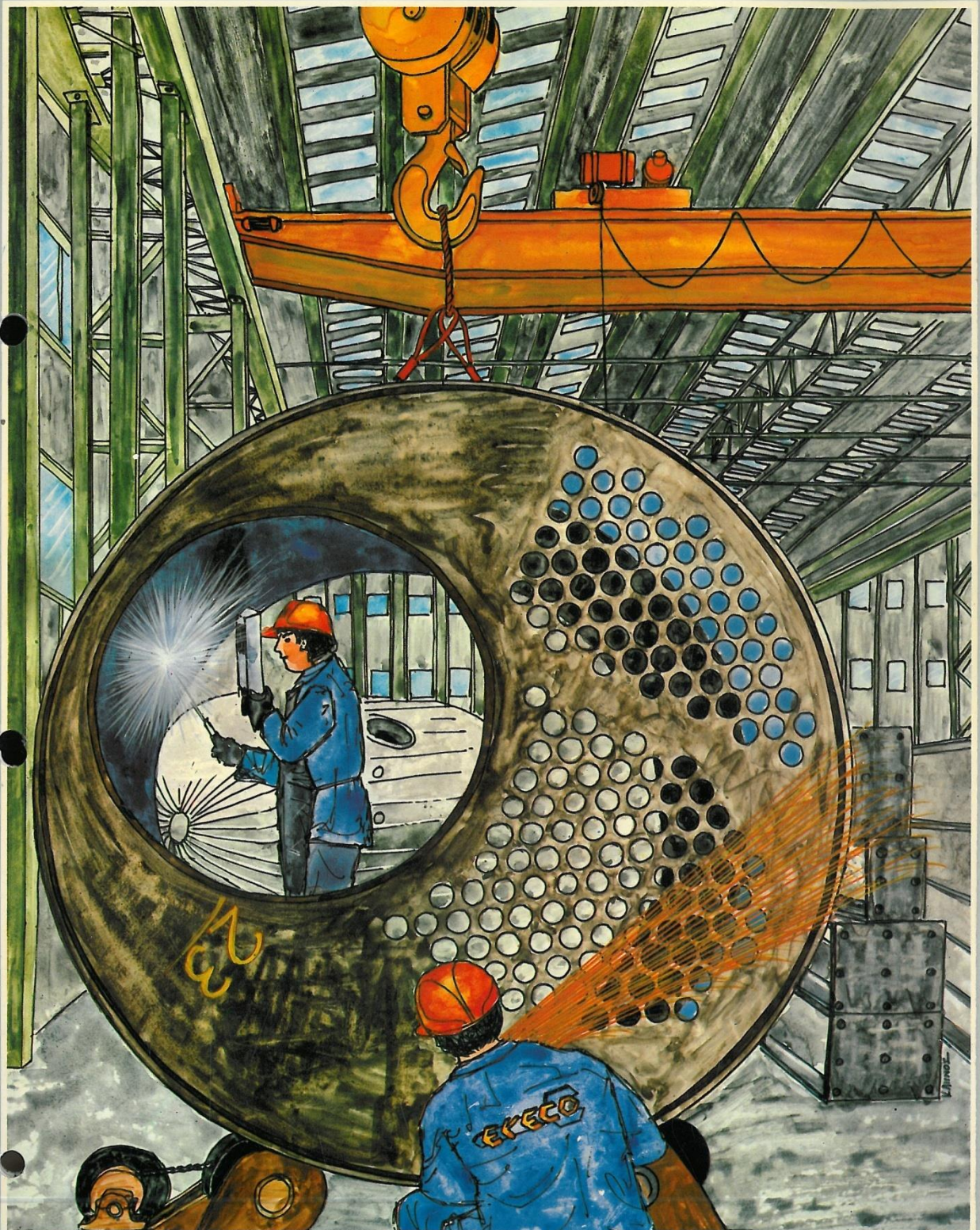


EYECO





Program

Industrial Structural Steelwork:

Steel Buildings, Hangars, Steel Bridges, etc.

Industrial Boilers:

Steam and Hot Water Boilers, Special Boilers for solid fuels, e.g., Coal, Lignite, Wood and Industrial Wastes, District Heating Plants.

Process Equipment:

Pressure Vessels, Tanks, Heat Exchangers, Separators, Cyclones, Electrostatic Precipitators, Columns, etc.

Piping and Ducts:

Pipelines for power plants, for chemical industry, for gas and fuel oil transport, penstocks.

Material Handling equipment:

Bucket elevators, Conveyors, Bulk material handling equipment, e.g., Bucket wheel Reclaimers and Stackers, Container and Dock Cranes.

Erection works :

Erection of Steel constructions and Mechanical equipment. Installation of pipe-networks for all mediums and pressures. Together with the erection, Eresco undertakes also the execution of the Civil works, the Electrical Installation with Instrumentation, as well as the Painting, the Insulation and the Cladding works.

Fabrication Standards

For Steel Structures, DIN
For Boilers, TRD RULES
For pressure Vessels, AD, ASME, LLOYD'S
For Storage Tanks, API, BS
Eresco undertakes also upon request the execution of Design and Shop Drawings.

Surveyor Certificates

Eresco's fabrications are usually supervised by Lloyd's Register of Shipping.
Upon Customer's request Eresco can supply certificates also from other surveyors, such as American Bureau of Shipping, Germanisches Lloyd, Surveillance, Bureau Veritas and TÜV.



Workshops

Manufacturing Shops

The fabrication works are executed in Ereco's factory in a total area of 38.000 sq. m.

Total covered area 6.000 sq. m., scheduled to be extended in the near future to 9.000 sq. m.

Handling Facilities

Ereco's manufacturing shops, are equipped with six overhead travelling cranes capable of lifting heavy structures up to 50 tons, with 10 m hook height. In addition, several bracket and pivoted cranes are installed in different working places of the workshop. The storage areas and stockyards are served by mobile cranes and forklifts.

Stockyards ①

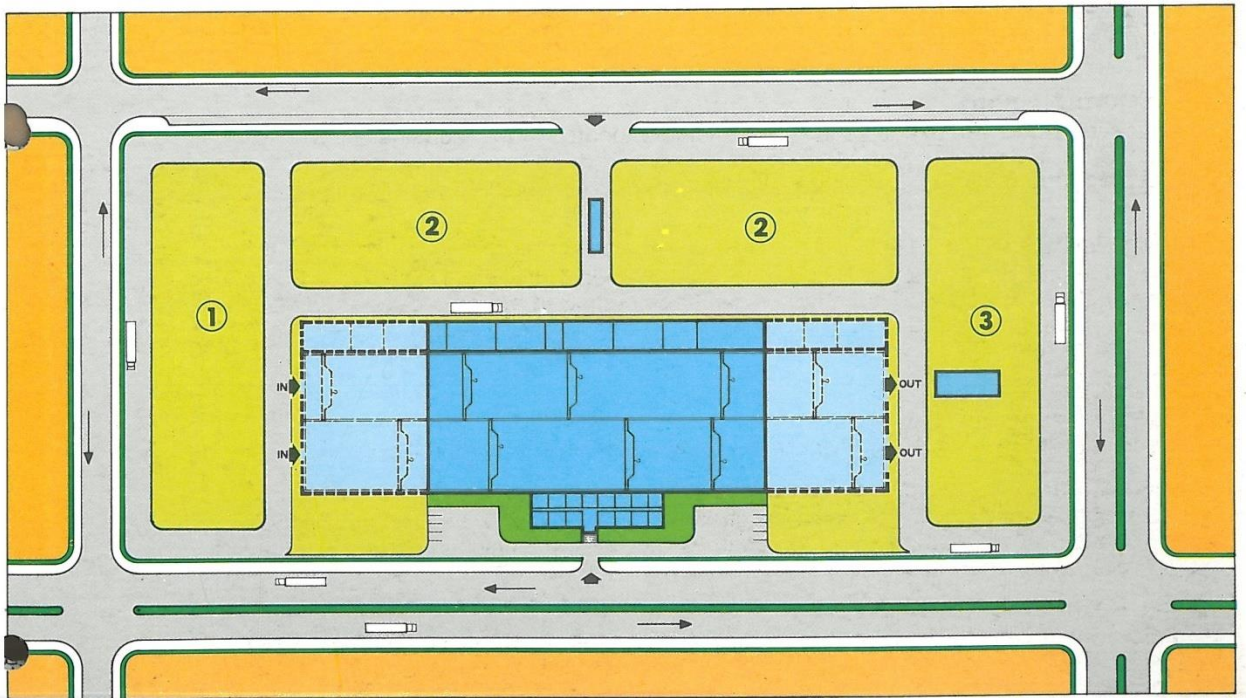
The stockyards for plates and sections, contain approx. 1000 tons of steel, in various dimensions and qualities, making possible the immediate start-up of urgent orders.

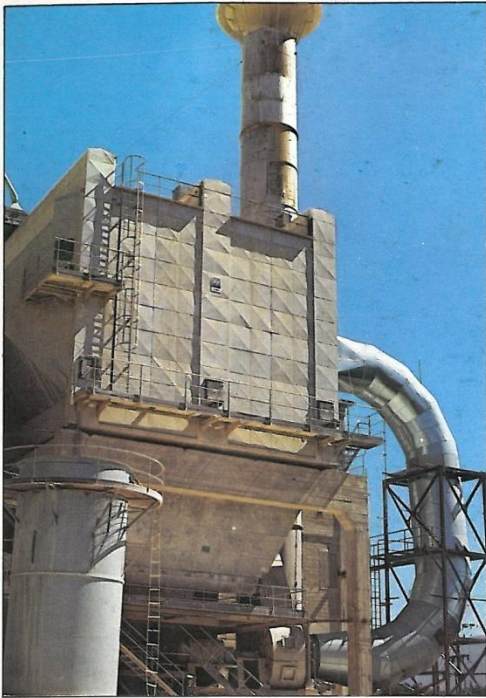
Storage Facilities for Finished Products ②

Marked and Packed fabrications can be weighed on the available 60 tons Weigh-Bridge (18,0 m long, 3,0 m wide) and can be stored in the 6000 sq. m finished-products storage-area of Ereco's workshop, until shipment is effected.

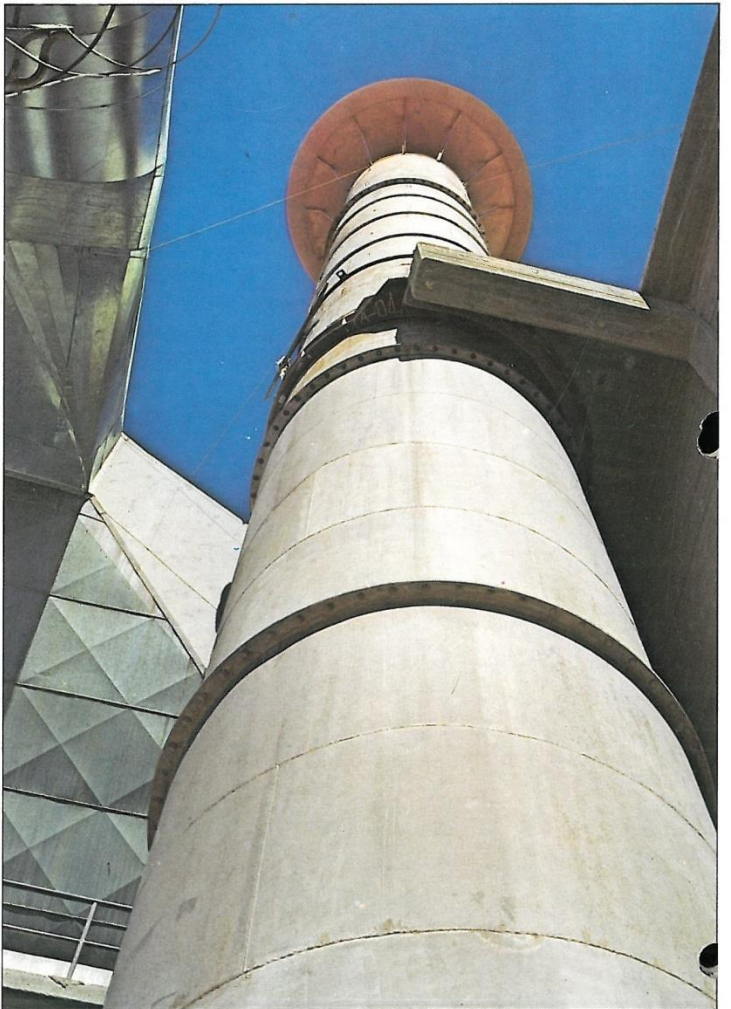
Surface Treatment Facilities ③

With the available sandblasting facilities at Ereco's Shop, all grades of surface preparation for painting can be achieved according to the Swedish Standard SIS 05.59.00, the American Standard SSPC-VIS 1 and the German Standard SL. DIN 18364.



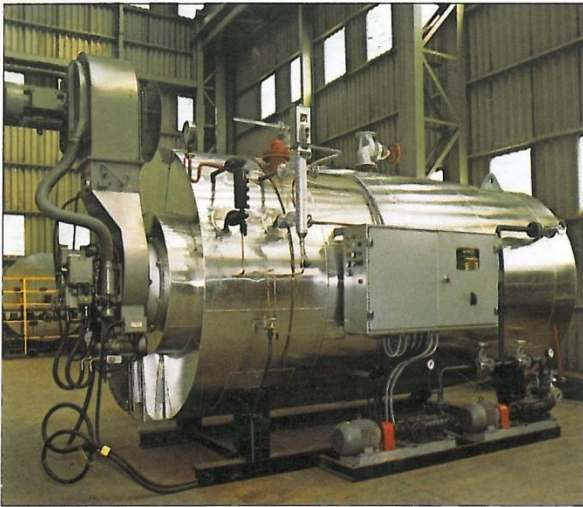
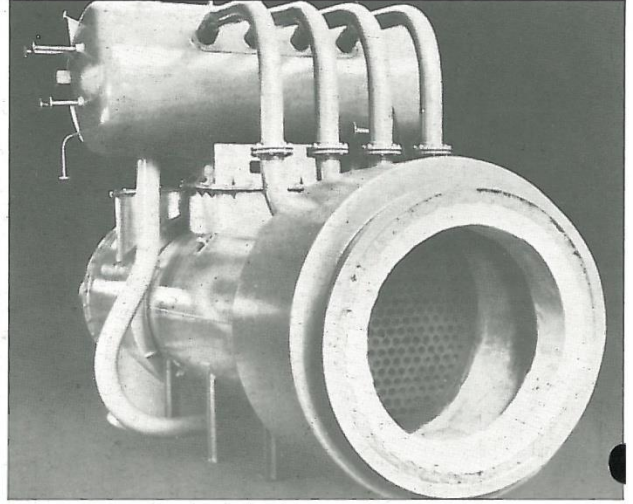


Electrostatic Precipitators

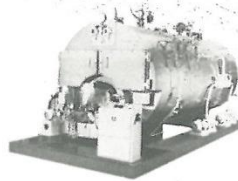


**Process
Equipment**

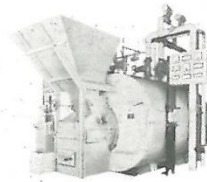
Boilers



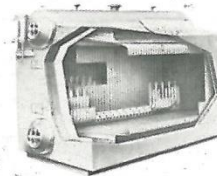
Flame tube boilers type DD for oil/gas firing
Capacities: from 325 to 8000 kg of steam/hour.
Pressures up to 16 bars



Flame tube boilers type CM for oil/gas firing
Capacities: from 2000 to 27.000 kg of steam/hour.
Pressures up to 32 bars.



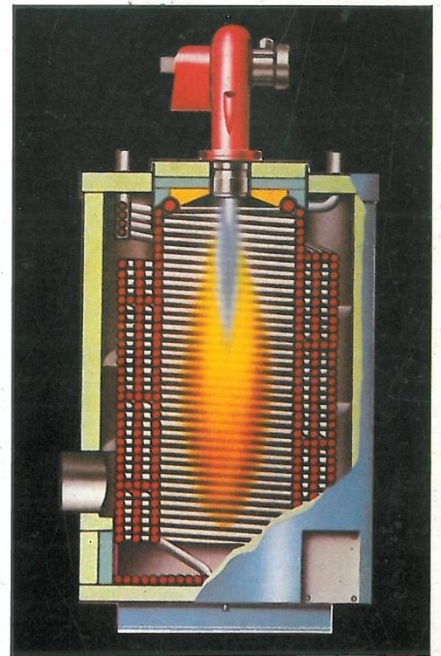
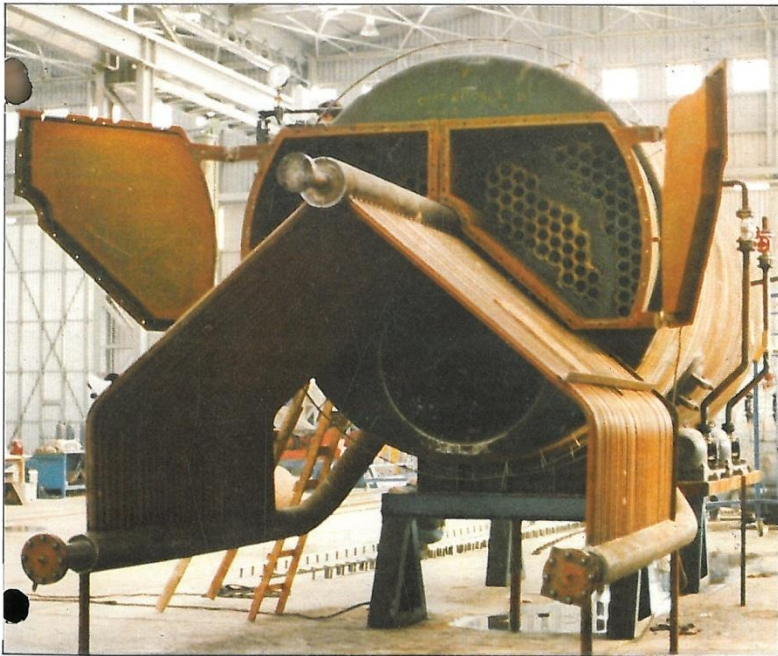
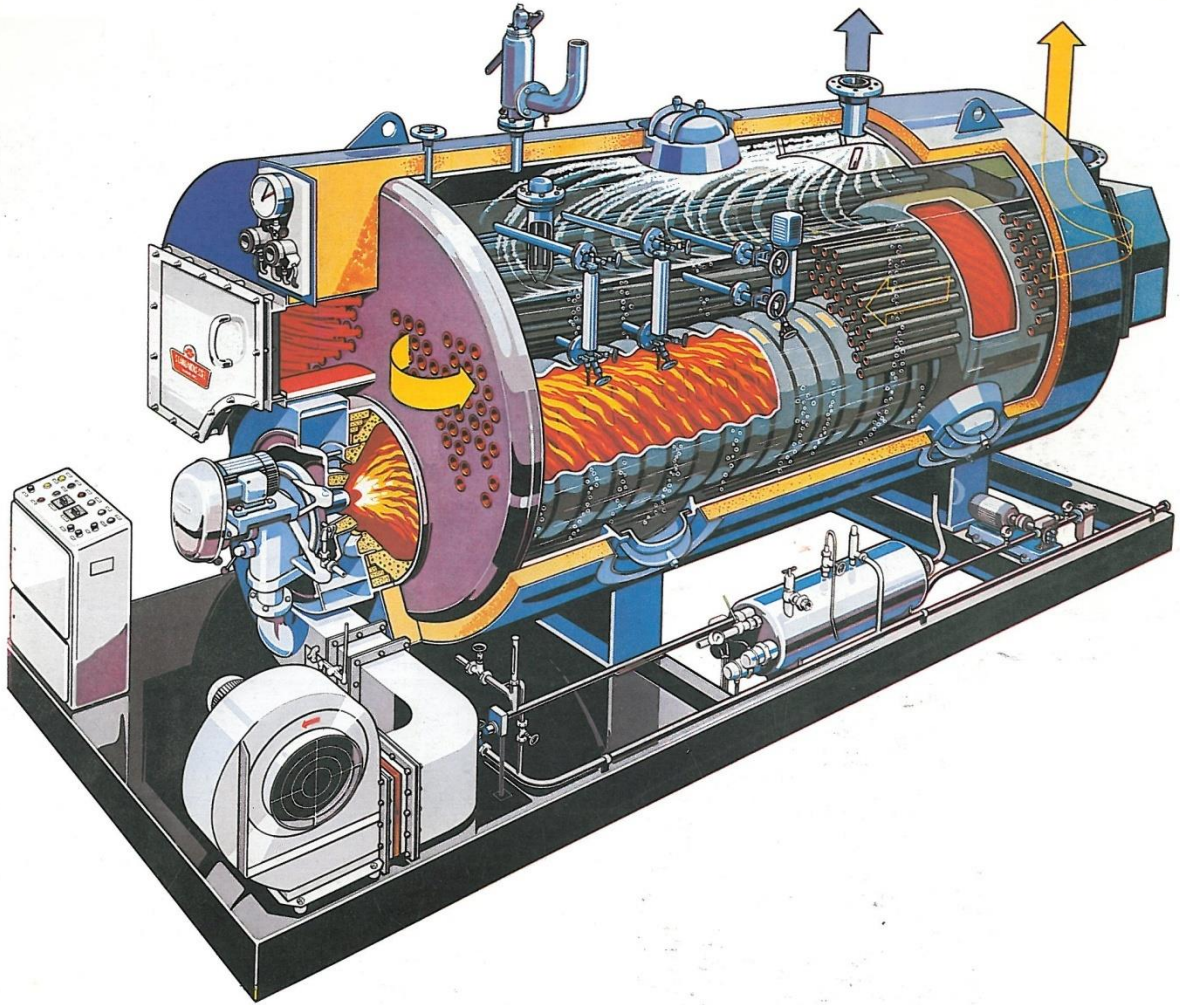
Flame tube boilers type VK for solid fuels
Capacities: from 1000 to 10.000 kg of steam/hour.
Pressures up to 20 bars



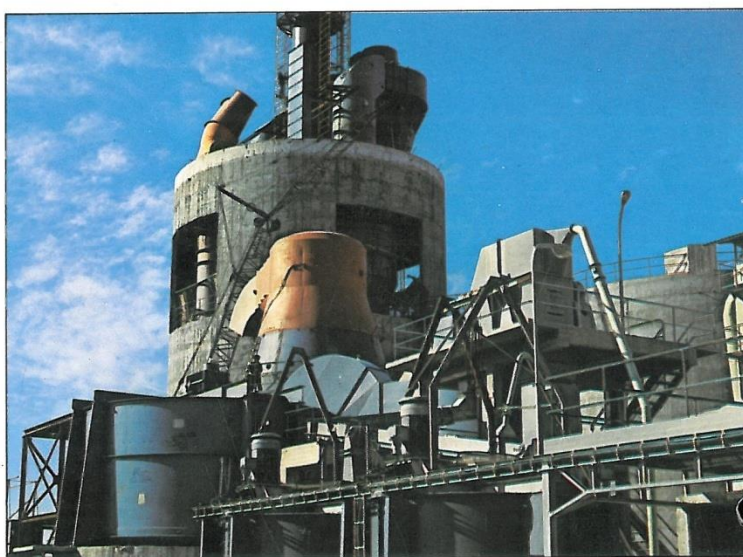
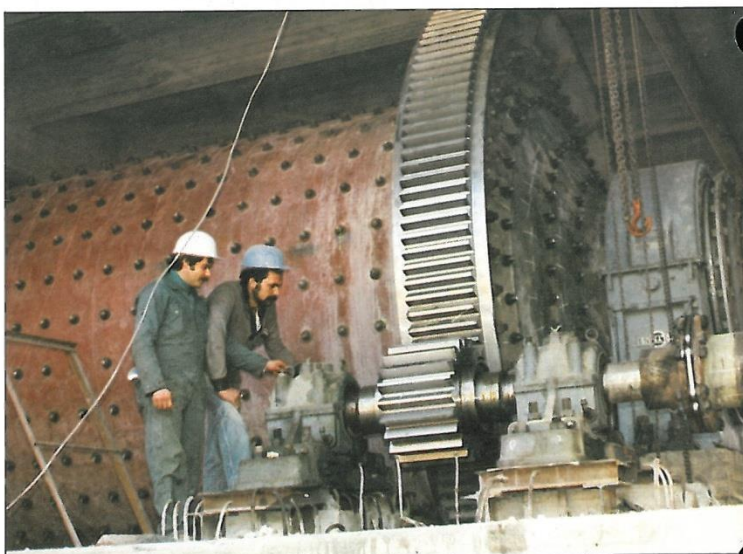
Water tube boilers type PORTA
Packaged design for capacities from 6.500 to 80.000 kg of steam/hour.
Pressures up to 87 bars



Water tube boilers
For big capacities and higher pressures.



BOILERS



Erection

Thousands of tons of steel structures, Process equipment and Machinery have been erected by Eresco, for Chemical, Cement, Automobile, Food and other industries. Furthermore, piping and Electrical installations including civil works, insulations and paintings have been executed in turn key projects.